

Using Bacula Community Edition



Introduction

- Nick Bebout
- Systems Administrator at the University of Southern Indiana
- nb@usi.edu
- <https://linux.usi.edu/~nb>

Overview

Components

- Director

The director supervises all operations and handles scheduling backups and restores

- Storage Daemon

Responsible for reading and writing your data to it's storage media (whether this may be tapes, files, cloud storage, etc.)

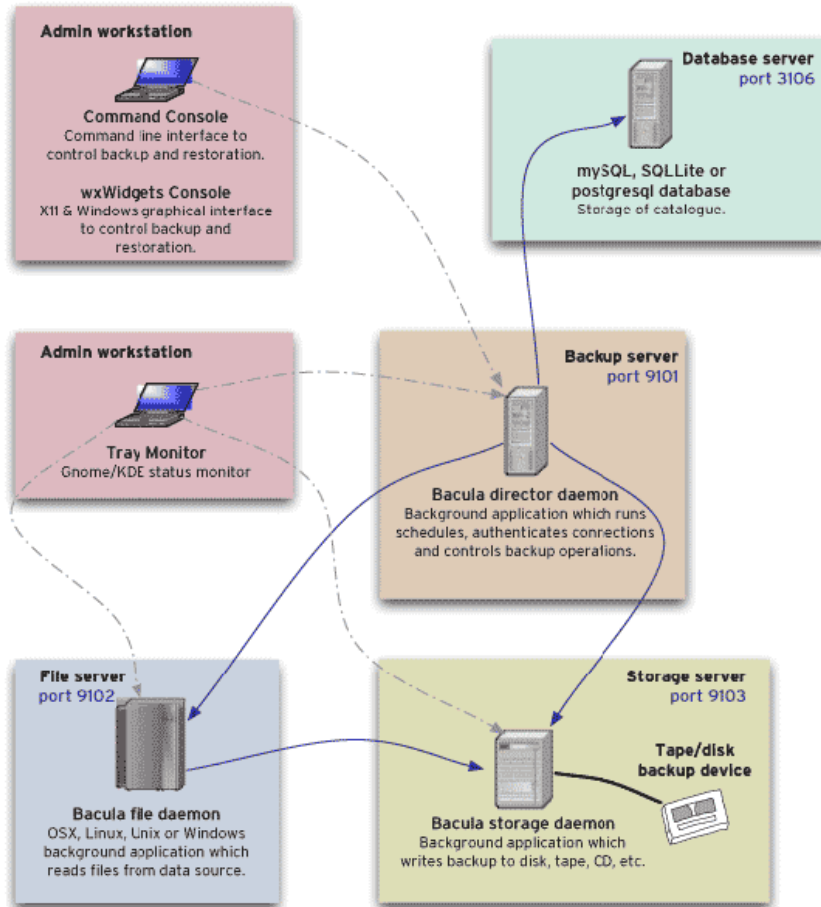
- File Daemons
 - Installed on each machine to be backed up
 - Responsible for sending the data and file attributes to the Storage Daemon when the Director requests
 - Responsible for writing the data and file attributes when the Director requests a restore

Terms

- Job
 - There are several types of job
 - Most common is “Backup” job and “Restore” job
 - Others exist, such as “Admin”, “Copy”, “Migrate”, etc.
- Volume
 - Place where data is stored
 - For tape, a tape is a volume
 - For disk, a file is a volume

Firewall Needs

- Console talks to director on 9101/tcp
- Director talks to File Daemon on 9102/tcp
- Director talks to Storage Daemon on 9103/tcp
- File Daemon talks to Storage Daemon on 9103/tcp
- Volume
 - Place where data is stored
 - For tape, a tape is a volume
 - For disk, a file is a volume

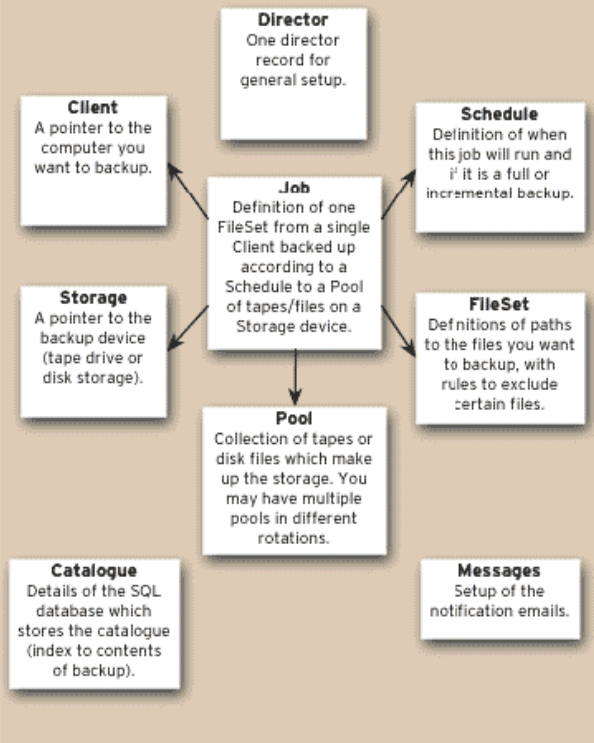


Bacula application interactions

Note that these applications may actually run on fewer machines than shown here. You could run everything on one machine if you only wanted to back up a local disk to a local tape or disk.

Port numbers are the defaults and can be changed.

Director config (bacula-dir.conf)

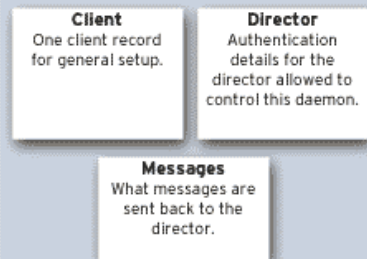


Console config (bconsole.conf)

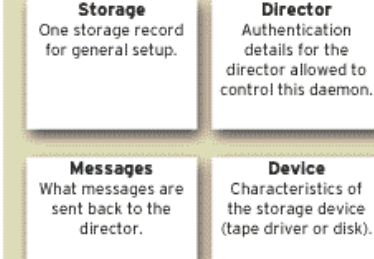
Director
Which directors this console can connect to. (Usually you have only one director.)

Simplified Bacula object definitions

File daemon config (bacula-fd.conf)



Storage daemon config (bacula-sd.conf)



Questions?